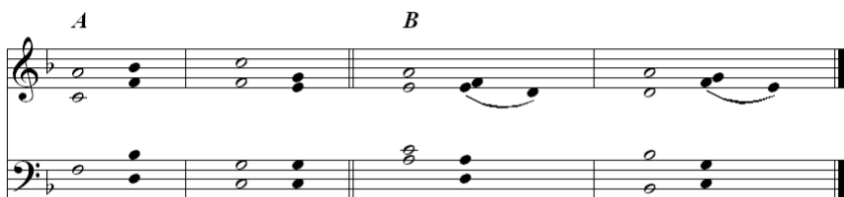


Music Notes for November 12, 2023

Today is the beginning of St. A's extended Advent Season in Year B of the Revised Common Lectionary. To mark the new season of the Church Year, our Service Music changes today. Listen to the [Presentation Hymn](#), [Sanctus](#), and [Fraction Anthem](#) for a preview.

Another change today is the way we will sing the psalm. During Advent, we will be singing the psalms using a form called "Simplified Anglican Chant." In this method, the choir and congregation sing the psalm text together using an eight-note pattern, in which the first half of a verse is sung to the first two notes, the second half of the verse is sung to the second two notes (all designated as part A), and a second verse uses the last four notes in the same way (all designated as part B). This method of chanting is quite easy and it allows the congregation to participate in singing the entire text of the psalm rather than just singing an antiphon (congregational refrain) several times. The psalm tone will be different each week, and the tone used this Sunday is shown below:



Listen to the chant for Psalm 78 [here](#).

The prelude and postlude today feature pieces based on the familiar German chorale, "Wachet auf, ruft uns die Stimme." This is translated in many ways, but we will be singing as our closing hymn today the version found in the Hymnal 1982, "Sleepers, wake! A voice astounds us." The prelude includes a setting of this hymn by Johann Ludwig Krebs (1713 – 1780), a German Baroque composer and one of J. S. Bach's star organ students. Krebs' talent at the organ was said to be second only to Bach himself. Krebs had difficulty finding organ positions as the intricate Baroque style of music was going out of fashion and being replaced by the simpler Classical style. The second setting during the prelude is the well-known excerpt from Bach's Cantata BWV 140, there set for violins, continuo, and tenor. Bach himself transcribed this work for organ solo as part of his Schübler Chorales. The postlude is a setting of the same tune by the American Composer Miles l'Anson Martin (1888-1949; Miles is an Irish name; l'Anson is Scottish and means the son of Ian.). Martin was born in Newark, New Jersey, and began playing the organ for Lenten services and Sunday School at age 14.

Today's Offertory anthem is "Keep your lamps trimmed and burning." This is a spiritual that contains references to the same parable of the wise and foolish maidens that the "Wachet auf" Chorale is based on. Similar theme, but very different treatment! The anthem is for *a capella* (unaccompanied) choir and percussion.